



Wai Keung Leung

CURRENT POSITIONS

Professor, Department of Medicine, University of Hong Kong

Assistant Dean (Research), Li KaShing Faculty of Medicine, University of Hong Kong

Director, Integrated Endoscopy Center, Queen Mary Hospital, Hong Kong

EDUCATIONAL AND CAREER EXPERIENCES

- MD, Chinese University of Hong Kong
- Fellow, Royal College of Physicians of London
- Fellow, Royal College of Physicians of Edinburgh
- Fellow, American College of Gastroenterology
- Fellow, American Gastroenterological Association
- Fellow, Hong Kong College of Physicians
- Fellow, Hong Kong Academy of Medicine

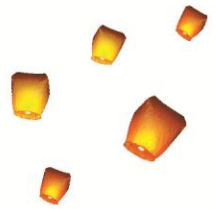
PUBLICATION

- Chan EW, Lau WC, Leung WK, et al. Prevention of dabigatran-related gastrointestinal bleeding with gastroprotective agents: A population-based study. *Gastroenterology* 2015 May 7. pii: S0016-5085(15)00644-7.
- Rex DK, Adler SN, Aisenberg J, ..., Leung WK, ..., Waterman M. Accuracy of capsule colonoscopy in detecting colorectal polyps in a screening population. *Gastroenterology* 2015;148:948-957
- Liu KS, Hung IF, Seto WK, ..., Leung WK. 10-day sequential versus modified bismuth-containing therapy as first-line and second-line treatment for *Helicobacter pylori*: An open label randomized crossover trial. *Gut* 2014;63:1410-5
- Leung WK, Lo OS, Liu KS, et al. Detection of colorectal adenoma by narrow band imaging (HQ190) versus high definition white light colonoscopy: A randomized controlled trial. *Am J Gastroenterol* 2014;109:855-63.
- Leung WK, Ho SSM, Suen BY, et al. Capsule endoscopy or angiography in patients with acute overt obscure gastrointestinal bleeding: A prospective randomized study with long term follow up. *Am J Gastroenterol* 2012;107:1370-6



Advances in Digestive Medicine

December 3-6, 2015
Taipei International Convention Center
Taipei, Taiwan



AWARDS AND HONORS

- Young Clinicians Award Program, World Congress of Gastroenterology 2002
- Bali Western Pacific Helicobacter Investigator Award, Third Western Pacific Helicobacter Congress, Bali, Indonesia, 2000