

Chun-Ying Wu

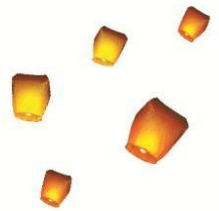
Professor of Medicine, National Yang-Ming University;
Professor of Law, Tunghai University;
Division of Gastroenterology, Taichung Veterans General

EDUCATION

- Ph.D.** **National Taiwan University**, Taipei, Taiwan, 2007
Concentration: Translational medicine and cancer biomarkers
- LL.M.** **Harvard Law School**, Cambridge, Massachusetts, USA, 2003
Concentration: Health law and biotechnology regulation
- LL.B.** **Tunghai University**, Taichung, Taiwan, 2000
Major: Law
- MPH** **Harvard School of Public Health**, Cambridge, Massachusetts, USA, 1993
Concentration: Quantitative method and research methodology
- M.D.** **National Taiwan University**, Taipei, Taiwan, 1991
Major: Medicine

CURRENT POSITIONS

Professor, Division of Gastroenterology, Taichung Veterans General Hospital
Joint Appointment Researcher, National Institute of Cancer
Adjust Professor, Faculty of Medicine, National Yang-Ming University
Joint Appointment Professor, College of Law, Tunghai University
Joint Appointment Professor, College of Public Health, China Medical University
Joint Appointment Professor, College of Life Science, National Chung-Hsing University
Associate Editor-in-Chief, *Advances in Digestive Medicine*
Supervisor, Taiwan Evidence-based Medicine Society
Commissioner, Institute Review Board, National Health Research Institute
Member of Medical Dispute Assessment Committee, Ministry of Health and Welfare
Vice Secretary General, Gastroenterological Society of Taiwan
Vice Secretary General, Digestive Endoscopy Society of Taiwan
Executive, Taiwan Liver Cancer Association
Executive, Society of Law and Medicine, Taiwan



EXPERIENCE

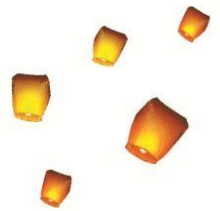
Ethical Committee, Ministry of Health and Welfare, Taiwan
Director, Bioethical and Health Law Center, Taichung Veterans General Hospital
Researcher, Boston Medical Center, Massachusetts, USA

RESEARCH INTERESTS

Digestive cancers translational research
Big data research
Microbiome research
Empirical study of medical malpractice
Biotechnology regulation

SELECTED MEDICAL ARTICLES PUBLISHED IN SCI JOURNALS (IMPACT FACTORS > 10):

1. **Wu CY***, Chen YJ, Ho HJ, Hsu YC, Kuo KN, Wu MS, Lin JT. Association between nucleoside analogues and risk of hepatitis B virus-related hepatocellular carcinoma following liver resection.
JAMA 2012 Nov 12, 308(18): 1906-13 (SCI, IF **35.289**, **3/153**)
2. **Wu CY***, Wu MS, Kuo KN, Chen YJ, Wang CB, Lin JT. Effective reduction of gastric cancer risk with regular use of NSAIDs in Helicobacter pylori-infected subjects.
J Clin Oncol 2010; 28(18): 2952-7. (SCI, IF **18.428**, **6/211**)
3. **Wu CY**, Lin JT, Ho HJ, Su CW, Lee TY, Wang SY, Wu C, Wu JC. Association of nucleos(t)ide analogues therapy with reduced risk of hepatocellular carcinoma in patients with chronic hepatitis B: a nationwide cohort study.
Gastroenterology 2014 Jul; 147(1): 143-51. (SCI, IF **16.716**, **1/76**)
4. **Wu CY***, Chan FK, Wu MS, Kuo KN, Wang CB, Tsao CR, Lin JT. Histamine-₂- receptor antagonists are an alternative to proton pump inhibitor in patients receiving clopidogrel.
Gastroenterology 2010 Oct; 139(4): 1165-71. (SCI, IF **16.716**, **1/76**)
5. **Wu CY**, Kuo KN, Wu MS, Chen YJ, Wang CB, Lin JT. Early H. pylori eradication decreases risk of gastric cancer in patients with peptic ulcer disease.
Gastroenterology 2009; 137(5): 1641-8 (SCI, IF **16.716**, **1/76**)
6. **Wu CY**, Hsu YC, Ho HJ, Chen YJ, Lee TY, Lin JT. Association between ultrasonography screening and mortality in patients with hepatocellular carcinoma: a nationwide cohort study.
Gut 2015 Feb 10; Epub ahead of print (SCI, IF **14.660**, **2/76**)
7. Hsu YC, Ho HJ, Huang YT, Wang HH, Wu MS, Lin JT, **Wu CY*** (**corresponding author**). Association between antiviral therapy and extrahepatic outcomes in patients with hepatitis C virus infection.
Gut 2015 Mar; 64(3): 495-503 (SCI, IF **14.660**, **2/76**)
8. Chen HP, Shieh JJ, Chang CC, Chen TT, Lin JT, Wu MS, Lin JH, **Wu CY*** (**Corresponding author**) Metformin decreases hepatocellular carcinoma risk in a dose-dependent manner: population-based and in vitro studies.
Gut 2013 Apr; 62(4): 606-15 (SCI, IF **14.660**, **2/76**)



9. **Wu CY***, Wu MS, Kuo KN, Wang CB, Chen YJ, Lin JT. Long term peptic ulcer rebleeding risk estimation in patients undergoing hemodialysis: a 10 year nationwide cohort study.
Gut 2011; 60(8): 1038-42. (SCI, **IF 14.660**, 2/76)
10. **Wu CY**, Wu MS, Chiang EP, Wu CC, Chen YJ, Chen CJ, Chi NH, Chen GH, Lin JT. Elevated plasma osteopontin associated with gastric cancer development, invasion and survival.
Gut 2007 Jun; 56(6):782-9. (SCI, **IF 14.660**, 2/76)
11. Lee TY, Lin JT, Zeng YS, Chen YJ, Wu MS, **Wu CY (Corresponding author)**. Association between nucleos(t)ide analogues and tumor recurrence in hepatitis B virus-related hepatocellular carcinoma following radiofrequency ablation.
Hepatology (in press) (SCI, **IF 11.055**, 5/76).
12. Hsu YC, Lin JT, Ho HJ, Kao YH, Huang YT, Hsiao NW, Wu MS, Liu YY, **Wu CY (Corresponding author)**. Antiviral treatment for hepatitis C virus infection is associated with improved renal and cardiovascular outcomes in diabetic patients.
Hepatology 2014 Apr; 59(4):1293-302 (SCI, **IF 11.055**, 5/76).
13. Hsu YC, Ho HJ, Wu MS, Lin JT, **Wu CY (Corresponding author)**. Postoperative peg-interferon plus ribavirin associated with reduced recurrence of hepatitis C virus-related hepatocellular carcinoma.
Hepatology 2013 Jul; 58(1): 150-7 (SCI, **IF 11.055**, 5/76).
14. Hsu YC, Lin JT, Chen TT, Wu MS, **Wu CY (Corresponding author)**. Long-term risk of recurrent peptic ulcer bleeding in patients with liver cirrhosis: a 10-year nationwide cohort study.
Hepatology 2012 Aug 56(2): 698-705 (SCI, **IF 11.055**, 5/76).

LAW TEXTBOOKS

1. **Wu CY**. Introduction and recommendation for current medical dispute assessment system. (Chinese).
Angle Publishing Co. Ltd. 2014 December, Taipei (ISBN: 978-986-255-542-2).
2. **Wu CY**, Chen RC, Yang CW, Wang HC, Lai HJ. Evidence-based Law: medical malpractice litigation and assessment (Chinese).
Angle Publishing Co. Ltd. 2014 October, Taipei (ISBN: 978-986-255-521-7).
3. **Wu CY**, Chen RC, Yang CW, Lai HJ. Medical negligence liability and medical malpractice assessment (Chinese).
Angle Publishing Co. Ltd. 2012 June, Taipei (ISBN: 978-986-255-187-5).
4. **Wu CY**, Lai HJ, Chen RC. Informed consent in trials: analyzing medical malpractice sentences of Taiwan (Chinese).
Medtoday Publishing Co. Ltd. 2010 July, Taipei (ISBN: 978-957-9201-45-2).



SELECTED LEGAL ARTICLES IN SCI JOURNALS:

1. **Wu CY**, Weng HC, Chen RC. Time Trends of Assessments for Medical Dispute Cases in Taiwan: A 20-year Nationwide Study.
Intern Med J 2013;43(9): 1023-30 (SCI, IF 1.823, 47/151).
2. **Wu CY**, Lai HJ, Chen RC. Malpractice experience in Taiwan 1991 vs. 2005.
Intern Med J 2009;39(4):237-42 (SCI, IF 1.823, 47/151).
3. **Wu CY**, Lai HJ, Chen RC. Patient characteristics predict occurrence and outcomes of complaints against physicians.
J Formos Med Assoc 2009;108(2):126-34 (SCI, IF 1.000, 78/151).